



THE PREPOSITIONS

PREPOSITIONS OF PLACE

at, in, on

In general, we use:

- **at** for a POINT / **in** for an ENCLOSED SPACE / **on** for a SURFACE

at	in	on
POINT	ENCLOSED SPACE	SURFACE
at the traffic lights	in the garden	on the wall
at the bus stop	in Lima (Cities)	on the ceiling
at the door	in Peru (Countries)	on the door
at the top of the page	in the closet	on the cover
at the end of the road	in my pocket	on the floor
at the entrance	in my wallet	on the carpet
at the crossroads	in a building	on the menu
at the front desk	in a car	on a page
at addresses		
at public space		

Look at these examples:

- Susan is waiting for you **at** the bus stop.
- The shop is **at** the end of the street.
- My plane stopped **at** Dubai and Hanoi and arrived in Bangkok two hours late.
- When will you arrive **at** the office?

- Do you work **in** an office?
- I have a meeting **in** Buenos Aires.
- Do you live **in** Peru?
- Earth is **in** the Solar System.

- The author's name is **on** the cover of the book.
- There are no prices **on** this menu.
- You are standing **on** my foot.
- There was a "no smoking" sign **on** the wall.

- I study **on** the 1st floor **at** 227 Schreiber Street **in** San Isidro.

PREPOSITIONS OF PLACE

at, in, on

Notice the use of the preposition of place **at**, **in** and **on** in these standar expressions:




at	in	on
at home	in a car	on a bus
at work	in a taxi	on a train
at school	in a helicopter	on a plane
at university	in a boat	on a ship
at college	in a lift (elevator)	on a bicycle, on a motorbike
at the top	in the newspaper	on a horse, on an elephant
at the bottom	in the sky	on the radio, on television
at the side	in a row	on the left, on the right
at reception	in Oxford Street	on the way

PREPOSITIONS OF TIME

at, in, on

We use:

- **at** for a PRECISE TIME
- **in** for MONTHS, YEARS, CENTURIES and LONG PERIODS
- **on** for DAYS and DATE

at	in	on
PRECISE TIME 	MONTH, YEARS, CENTURIES and LONG PERIODS 	DAYS and DATES 
at 11 o'clock	in January	on Friday
at 2:30pm	in spring	on Mondays
at midday	in the winter	on July 28th
at dinnertime	in 1960	on Mar. 14th 2016
at bedtime	in the 1960s	on Valentine's Day
at sunrise	in the next century	on Independence Day
at sunset	in the Ice Age	on my birthday
at the moment	in the past/future	on New Year's Eve

Look at these examples:

- I wake up **at** 6 o'clock.
- My mom cooks **at** midday.
- Susan goes home **at** lunchtime.

- People are happy **in** December.
- I would like to buy a house **in** the future.
- Cars are going to fly **in** the next century.

- Do you work **on** Saturdays?
- Valentine's day is **on** February 14th.
- Do you travel **on** New Year's Eve

PREPOSITIONS OF TIME

at, in, on

Notice the use of the preposition of time **at** in the following standard expressions:

Expression	Example
at night	I watch Netflix at night .
at the weekend*	I visit my family at the weekend .
at Christmas*/Easter	My mom buys a lot of presents at Christmas .
at the same time	We go to school at the same time .
at present	He is not here at present . Try later.

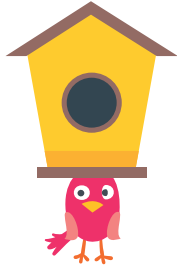
Notice the use of the preposition of time **in** and **on** in the following standard expressions:

in	on
in the morning	on Monday morning
in the mornings	on Thursdays mornings
in the afternoon (s)	on Tuesday afternoons
in the evening (s)	on Saturday evening

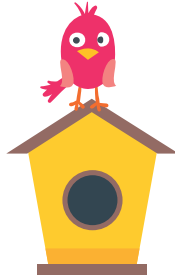
When we say **last**, **next**, **every**, **this** we do not also use **at**, **in**, **on**.

- I went to Punta Cana **last** June. (**not in last** June)
- He is returning **next** Tuesday. (**not on next** Tuesday)
- I travel with my family every Easter. (**not at every** Easter)
- We'll call you **this** evening. (**not in this** evening)

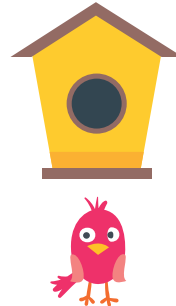
PREPOSITIONS OF SPACE



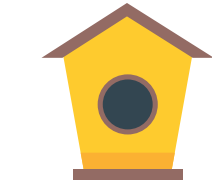
under



on



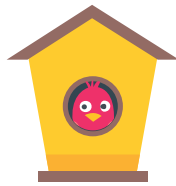
below



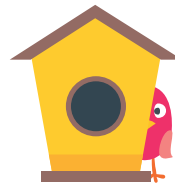
over/above



at



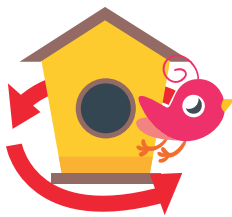
in/inside



behind



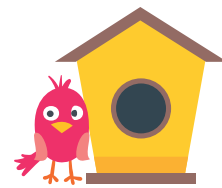
in front of



round/around



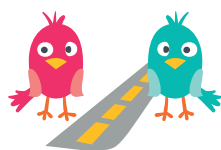
near/close to by



next to/by/beside



against



opposite

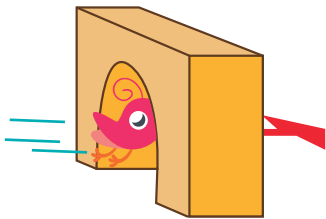


among



between

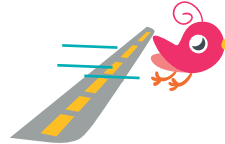
PREPOSITIONS OF MOVEMENT



through



along



across



past



off



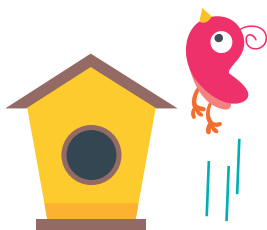
into



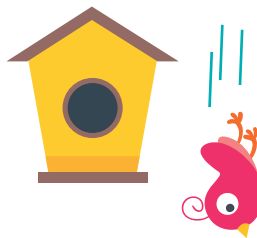
out of



onto



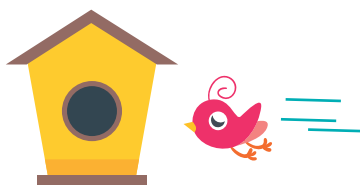
up



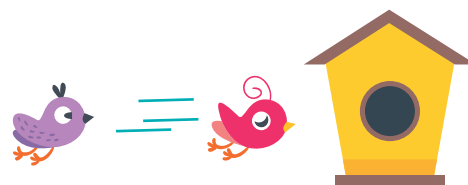
down



over



toward



from ... to